

Company Profile

Greatwall Asia Limited



GREATWALL ASIA LIMITED
長城科技

GREATWALL ASIA LIMITED IS A TRUSTED LEADING PROVIDER
OF CLOUD COMPUTING, HIGH AVAILABILITY, FAULT-TOLERANT
AND BACKUP SOLUTIONS.

WHAT WE DO

We have deployed hardware and software for more than 50 sites in Asia. We work closely with our partners to provide support for their projects through joining their meetings for demo/POC and continue to offer our assistance post-sales and post-deployment.

WE ARE A TEAM OF BUSINESS CONTINUITY SOLUTIONS SPECIALISTS WITH IN-DEPTH KNOWLEDGE OF THE SOLUTIONS AVAILABLE.

FACTS ABOUT US

WE ARE...

a team of business continuity solutions enthusiasts. We dedicate ourselves to bringing customers comprehensive solutions that ensure the companies' servers have little to zero downtime as well as backup and disaster recovery solutions to protect important applications and databases.

OUR SOLUTIONS...

include business continuity hardware and software to cloud computing and data storage, information security systems and services, advanced display, electronics manufacturing services. We offer a wide variety of software and hardware that provides business continuity, disaster recovery, data and system protection.



We're Professional



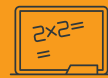
We're Supportive



We Have 8 Engineers
Ready To Assist



We Have Another 8 In
Sales & Operations



We're Knowledgeable



We're Available

WITH OUR HELP, MAXIMISING UPTIME AND ENSURING BUSINESS CONTINUITY IS NO LONGER ROCKET SCIENCE.

some of OUR PROJECTS

01.

Project: HSBC Bank
Country: Hong Kong

02.

Project: City of Dreams
Country: Macau

03.

Project: Macau Studio City
Country: Macau

04.

Project: Hong Kong Sports Institute
Country: Hong Kong

05.

Project: Land Transport Authority
Country: Singapore

06.

Project: Bangkok Blue Line
Extension Project
Country: Thailand

07.

Project: Cathay Pacific
Country: Hong Kong

08.

Project: Taipei 101
Country: Taiwan

09.

Project: Hong Kong Convention
and Exhibition Centre
Country: Hong Kong

10.

Project: Macau Bank of China
Country: Macau

11.

Project: National University of
Singapore
Country: Singapore

12.

Project: Robert Bosch (M) Sdn Bhd
Country: Malaysia

13.

Project: HP Malaysia
Country: Malaysia

14.

Project: ING Bank
Country: Singapore

15.

Project: Adimmune Corporation
Country: Taiwan

16.

Project: Court of Justice
Country: China

GWFT Servers



Our very own GWFT servers prevent downtime and is designed to achieve the maximum continuous uptime of 99.999%.

GWFT servers are suitable for integrated monitoring system (ISCS), Automatic Train Control (ATC), Automatic Fare Collection System (AFC), Supervisory Control and Data Acquisition (SCADA) and other key business systems.



Stability & Availability Guaranteed

Two physical units of CPU, memory and disk data are synchronised in real time to ensure that in the event of failure, the business system does not suffer from data loss and the business system continues running, achieving the true sense of zero downtime.



Simple Operation & Implementation

With GWFT servers, simply log in to the console to deploy the operating system and application and it will start syncing to the other physical unit in the background. This synchronisation does not affect the business nor require secondary installation and script configuration.



Easy to Use and Operate

Based on B/S format, GWFT servers are simple and intuitive, easy to operate and managed. The protected business systems are single-IP, single-MAC, single-host name which build the HA architecture without the need to configure the script, easy to manage and maintained by the administrator.



Self Monitor

GWFT servers support email, SMS and other communication methods to issue warnings, and support secondary development so that you can always have a clear knowledge of the status of the running business systems.

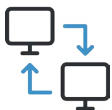
Key Features of GWFT Servers



Through the usage of hardware redundancy synchronization technology, during failure, the business system suffers from zero seconds downtime, reliability up to 99.999%



Using integrated open source virtualisation software, each Greatwall redundancy server can run multiple business systems at the same time, supporting system load balancing technology.



It supports system application snapshot backup technology, during any software failure, it can be seamlessly migrated to the backup system.



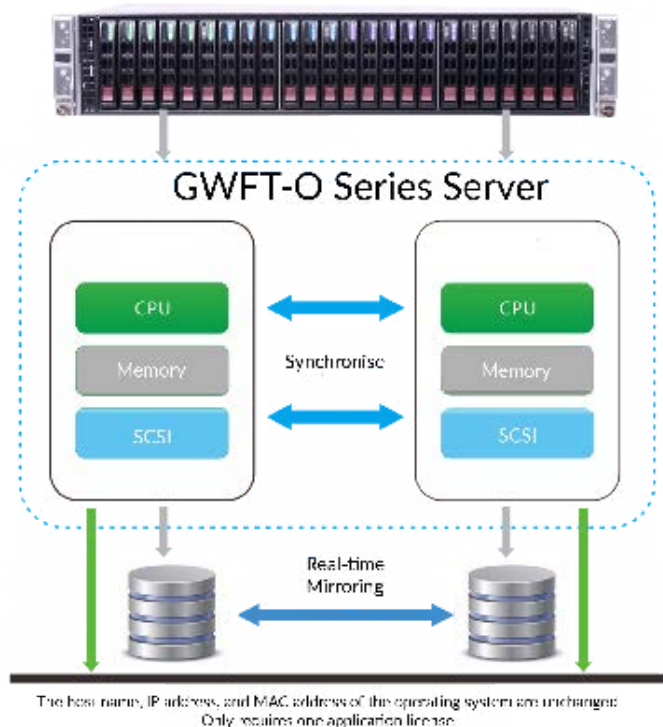
All hardware spare parts support online non-stop maintenance, after the system replaces the faulty parts, it will automatically resume synchronisation.



Support domestic LINUX, WINDOWS, UBUNTU, REDHAT and other mainstream operating system around the world. Open protocol, supports integration with third-party network management software.



System management hardware provides real-time monitoring of all hardware and software systems, preempts failure, rapid diagnosis and online replacement function. It sends warning signal via emails and instant messaging applications.

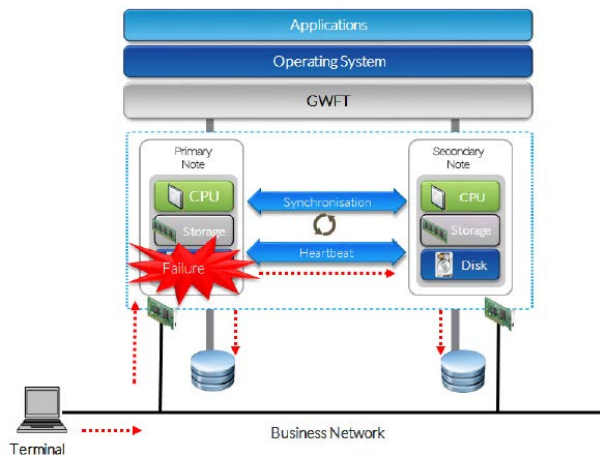


Each component of the GWFT-O series servers is designed with redundancy and is easily understood as a built-in redundancy architecture of the server. During deployment, users only need to install the business systems once. The backend will automatically perform data synchronisation without the need for human intervention. Users can then achieve zero-downtime protection without having to do any script configuration.

The protected business system requires only a single application, operating system and authorisation and it uses a single IP address, single computer, single MAC address but user will achieve two guarantees.

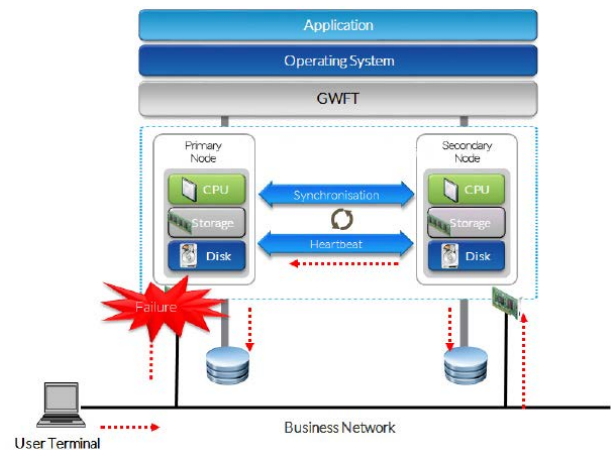
Fault Protection

Disk/Storage Failure



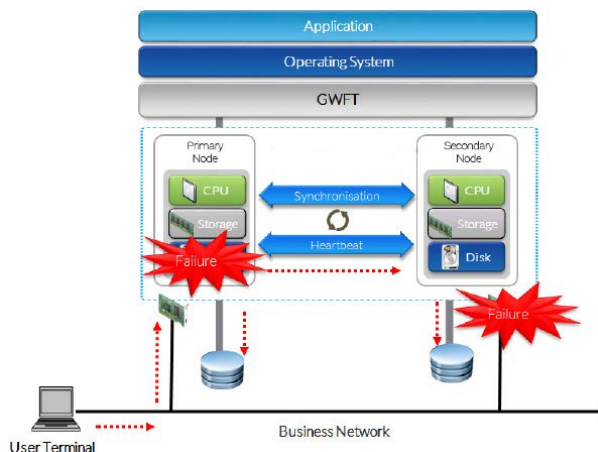
When primary node has a hard disk or storage failure, the system writes data from primary node to the hard disk or storage of secondary node via the heartbeat network to ensure that the application is not interrupted.

Network Failure



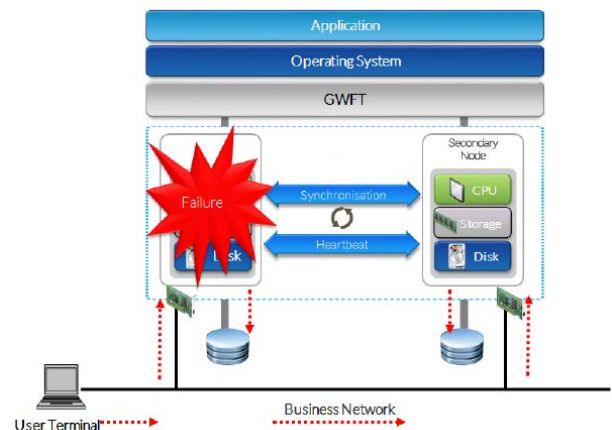
When primary node has a network failure, primary node will be connected to secondary node's network via heartbeat network. Thus ensuring that the application is not interrupted.

Intersection Failure



Even if there is a storage failure in primary node and a network failure in secondary node, the system is still working continuously to ensure that $RTO = RPO = 0$.

Primary Node Failure



When primary node fails, secondary node will start working immediately, ensuring zero downtime. (In high availability mode, the application will restart in cell 1.)



Neverfail Group

Keep your operation up and running no matter what



Neverfail Continuity Engine



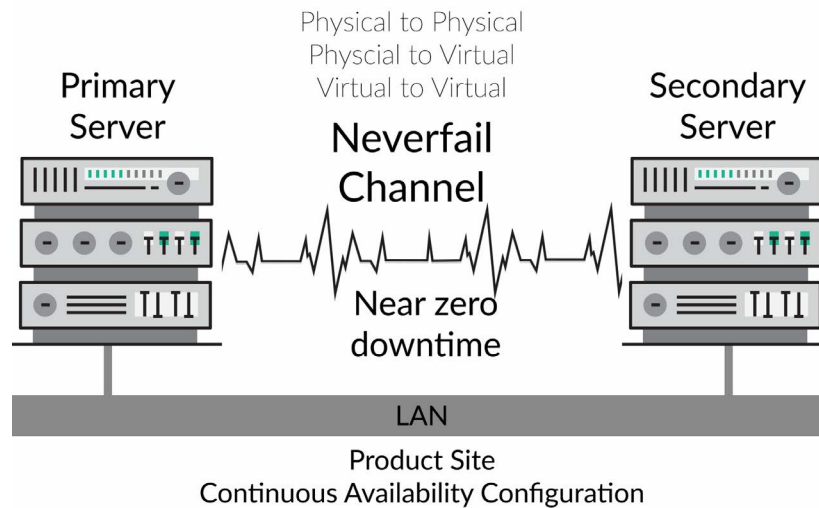
The Neverfail Continuity Engine delivers continuous availability that businesses, their users, and their customers demand for their most important business services.

KEY BENEFITS

- Keeps users connected to their critical applications
- Provides a single availability solution for physical and virtual platforms
- Significantly reduces bandwidth requirements for DR
- Ensures critical applications are recoverable in seconds to minutes
- Conduct DR tests fast and without interrupting production servers

Continuity Engine protects your most mission-critical applications with a goal of zero downtime. It delivers near instantaneous failover with near-zero recovery times by proactively monitoring the health of your applications and ensuring that it is always in a healthy condition and in a healthy site.

Neverfail Continuity Engine



APPLICATION-AWARE PROTECTION

Continuity Engine ensures that critical applications remain available regardless of the source of threat. Continuity Engine is designed with an application-aware core, a true warm stand-by server architecture, and deep integration with VMware vSphere.

SIMPLIFYING DISASTER RECOVERY

A deployment wizard lets administrators quickly protect virtual machines and even stand-alone physical servers with no manual setup or scripting. The entire deployment and synchronization of secondary VMs is handled completely within the setup wizard. Critical applications are protected within minutes of deployment. Switchover and switch-back are automated and symmetrical, so Continuity Engine can even reduce outages associated with planned downtime, keeping business services online — more than any other solution architecture.

EASY TO DEPLOY, COST-EFFECTIVE, AND FULLY INTEGRATED

Continuity Engine integrates with vSphere and adds our application-aware intelligence and WAN optimized replication, along with support for physical servers and multiple hypervisors. When a problem is detected, regardless of whether it's in hardware, OS, or applications, Continuity Engine is able to choose the best corrective action from the available options. Continuity Engine can automatically perform remedial recovery actions, trigger a VMware HA event or transition the active server to the stand-by secondary. Continuity Engine allows administrators to add physical servers and systems hosted on other hypervisors to SRM recovery plans.

Neverfail HybriStor™

Cloud Storage Appliances

Cloud-scale deduplication data protection target

With optimized secondary storage for every environment, we designed our HybriStor Cloud Storage appliances to fit every need. From remote offices to large cloud-scale data centers, HybriStor delivers a common management experience across all sites, vendor neutral access to any application, global deduplication, site-to-site redundancy and WAN optimized replication.

HybriStor optimizes local storage for rapid restoration while reducing the amount of data transferred across the WAN. All of this combines to deliver an exceptional data protection experience for any cloud environment you might have, including private, public and hybrid.

KEY BENEFITS



- **Instant data recovery**
InstaCache™ technologies enable automatic data retrieval from cost-efficient deduped storage to high performance SSD storage for local and remote instant data recovery.
- **Smaller backup and archive windows**
Offers up to 95% reduced storage data transmission and consumption by deduplicating and compressing data before storing to disk. The result is high performance, low memory demands, and massive improvements in storage efficiency.
- **Improved WAN performance**
Reduces WAN consumption by transmitting only globally unique and compressed data over the wire alleviating the effects of latency, maximize bandwidth utilization and relieve network congestion.
- **OpenStack Swift object storage support**
Provides a NAS interface and works as a gateway to local OpenStack Swift object storage. Performance can scale-up and capacity can scale-out with deployment of additional object storage nodes.
- **Secure transmission of data**
Incorporates advanced, military grade AES 256-bit encryption for secure transmission of data in-flight.
- **Centralized management, for maximum interoperability**
Includes multi-site, single-pane-of-glass management to lower operational costs, improve disaster recovery preparedness and eliminate vendor lockin. Simplified administration enables seamless integration with physical and virtual applications.

UNITRENDS



All-in-One Enterprise Backup and Continuity

Unitrends Enterprise Backup™



Cloud-Empowered Backup and Recovery Software for Virtual & Physical Protection

Unitrends's Enterprise Backup provides complete backup and recovery for your physical and virtual assets, and runs on the hardware of your choice. Whether you're trying to protect one VMware vSphere host with a hand full of VM's or a complete data center environment with physical servers and thousands of vSphere and Hyper-V virtual machines, Unitrends Enterprise Backup does it all.

Editions of Unitrends Enterprise Backup

Essentials	Standard	Enterprise	Enterprise Plus
Protects up to 10 resources (sockets or servers)	Protects an unlimited number of resources	Protects an unlimited number of resources	Protects an unlimited number of resources
<ul style="list-style-type: none">• Hypervisor-level protection• File-level protection• Integration with Unitrends Cloud	<ul style="list-style-type: none">• Adds second-site WANOptimized backup copies• Adds NAS file protection	<ul style="list-style-type: none">• Adds enterprise application protection	<ul style="list-style-type: none">• Adds NDMP• Adds unlimited ReliableDR recovery assurance

Unitrends Enterprise Backup™

Key Features



All-in-one solution—Provides integrated backup, replication, deduplication, archive and instant recovery.



World class RPO—Provides near continuous data protection by enabling backups as often as every 60 seconds.



Heterogeneous protection—Delivers virtual and physical protection of over 220 version of servers, storage devices, operating systems, and applications.



Adaptive Deduplication—Combines global byte-level deduplication and inline deduplication with deduplication acceleration to speed up backups, optimize storage capacity and speed up WAN data transfers.



Flexible Virtual protection—Host and guest level protection for VMWare VSphere, Microsoft Hyper-V, and Citrix XenServer.



Radically simple user experience—New user interface significantly reduces management time by providing an intuitive dashboard view for identifying risk, solving problems, and managing end-to-end data protection.



Protects large scale deployments—Enhanced storage integration with NDMP NAS protection, automated recovery testing and compliance testing tools.



Recovery Assurance—Enterprise Plus includes the industry's first automated recovery solution for Windows Physical, VMWare, and Hyper-V virtual environments, dramatically reducing the cost of disaster recovery testing and recovery.



Cloud-Empowered—Integrated with Unitrends No Limits Cloud™ and Forever Cloud™ retention for cloud-based storage, and Unitrends Disaster Recovery Services (DRaaS) for spin-up in the cloud.



Unitrends Bridge—Delivers local instant recovery of physical (P2V) or virtual (V2V) in one click.



WAN-optimized replication—Delivers 2nd site WAN optimized backups by combining deduplication, deduplication acceleration, compression, and encryption for secure byte-level data transmission.

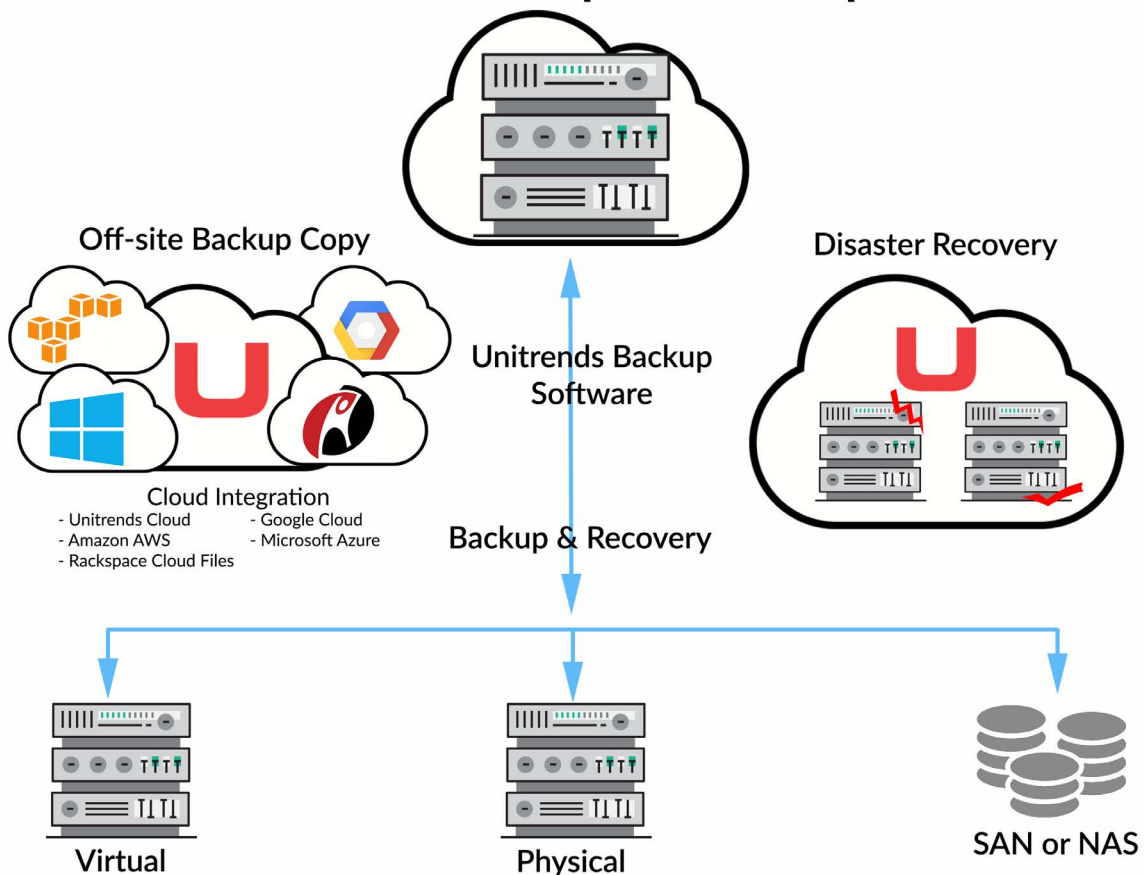


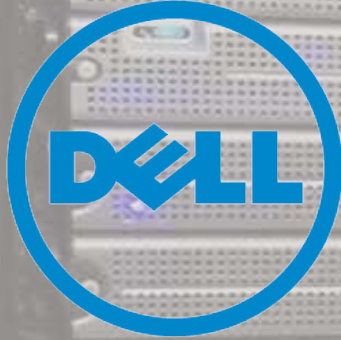
Third-party cloud integration—Works with AWS S3, Google Cloud Storage, Google Nearline, Rackspace CloudFiles.

Flexible Packaging and Deployment Options

Unitrends Enterprise Backup can be purchased as a fully integrated, prepackaged virtual appliance running on VMware vSphere (including vSphere 6) or Microsoft Hyper-V, or as installable software for Redhat Enterprise Linux (RHEL) or CentOS. Choose from 4 editions, ranging from the Essentials Edition for basic backup to the Enterprise Plus Edition for a full array of enterprise class features, including Recovery Assurance which automatically certifies your recovery is working properly.

Unitrends Enterprise Backup





PartnerDirect
Preferred



A collective force committed to advancing human progress

Dell Servers



PowerEdge servers are scalable, flexible, efficient solutions platforms with streamlined and intuitive management that can help you meet changing missions and drive business success.

Dell PowerEdge servers maximize operational effectiveness and optimize flexibility at any scale. Focused on accelerated performance, enhanced automation and simplified management, the PowerEdge line-up of servers can help you experience worry-free computing through:

- Greater IT efficiency
- Superior IT agility
- Better IT reliability

PowerEdge rack, tower and blade servers are customer-inspired, feature-rich platforms designed to deliver the performance and versatility you need to meet all challenges in almost any setting, from small businesses to enterprise hyper-scale environments.

Designed for your taxing workloads, such as email, database and virtual environments, Dell PowerEdge servers are ideal for a growing small business. These cutting-edge solutions help you answer today's IT challenges with tomorrow's technologies with no compromise or downtime.

Achieve the performance, efficiency and versatility you need to scale smarter, manage more efficiently, and innovate faster. PowerEdge rack servers are designed with carefully balanced processor memory, IO and internal storage resources. Innovative agent-free management, based on the intelligence of our powerful integrated Dell remote access controller (iDRAC) with Lifecycle Controller, helps you more easily deploy, monitor, manage and maintain servers across their entire life cycles.



GREATWALL ASIA LIMITED
長城科技

Greatwall Asia Limited

Address: Rm D, 4/F, Century Centre, 33-35 Au Pui Wan Street
Fotan, Shatin, New Territory, Hong Kong
Phone: +852 3951 2818

Address: Jalan SS15/4 Subang Jaya
47500 Selangor Darul Eshan, Malaysia
Phone: +60 12-638 3060

eMail: info@greatwall-asia.com

Web: <http://greatwall-asia.com>